

The WS-4L separate water cooled wire feeder is compatible with the MAGYS 500 WS. welding machine.

## SYNERGIC

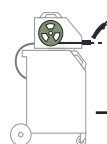
- **Synergic function** : The wire speed setting is controlled from the wire feeder.

## INDUSTRIAL

- Can be fitted with water cooled torches for optimal productivity.
- Its heavy duty construction ensures a long service life.
- Its 4 wheel drive system combined with a 75W motor ensures effective wire feeding with any wire type.






## MOBILE

- Supplied with its wire feeder support to attach on the welding generator. The wire feeder can be placed on the wire feeder support or be moved on the ground with the optional wire feeder trolley.
- Water cooled Inter connection cables from 1.6m to 20m.
- Lifting eyes.

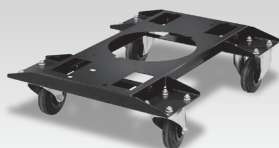


WS-4L wire feeder  
ref. 033573

See technical data sheet :  
MAGYS 500 WS - ref. 032200

PACK TYPE : ref. 032330 (no regulator)								
	+		+		+		+	
<b>MAGYS 500 WS</b> ref. 032200		<b>WS-4L wire feeder</b> ref. 033573		<b>Inter connection cables</b> 10m - 70 mm <sup>2</sup> ref. 033658		<b>Earth cable</b> 4m - Ø 70 mm <sup>2</sup> ref. 043831		<b>Steel / Stainless steel</b> 500A - 4m (WATER) ref. 041004

## OPTIONS



Trolley for WS wire feeder  
040977



Regulator 30L/min  
 🇫🇷 041622  
 🇩🇪 041219  
 🇬🇧 041646



Polarity reversal cable  
033689

Inter connection cables

L.	WATER	
1,6m	70 mm <sup>2</sup>	033696
5m	70 mm <sup>2</sup>	033641
10m	70 mm <sup>2</sup>	033658
10m	95 mm <sup>2</sup>	034877
15m	95 mm <sup>2</sup>	034884
20m	95 mm <sup>2</sup>	034891

U <sub>1</sub>		I <sub>1</sub>		Ømm		Ømm		Electronic Control	EN60974-5 (40°C)	IP	cm/kg
---	---	GAS	NO GAS	200	300	200	300				
24V	4A	0.6 - 1.6	0.9 - 2.4	✓	✓	75W	1.0 - 1.2	410A @ 60% 320A @ 100%	23S	25x59x56 / 17	