

The WS-4R separate AIR cooled wire feeder is compatible with MAGYS 400 GR and 500 GR welding machines.

SYNERGIC

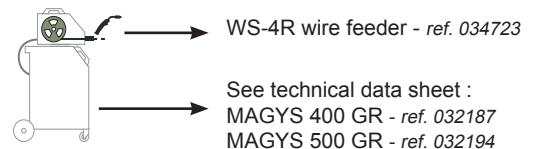
- **Synergic function** : The wire speed setting is controlled from the wire feeder.

INDUSTRIAL

- Its heavy duty construction ensures a long service life.
- Its 4 wheel drive system combined with a 75W motor ensures effective wire feeding with any wire type.

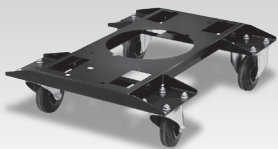
MOBILE

- Supplied with its wire feeder support to attach on the welding generator. The wire feeder can be placed on the wire feeder support or be moved on the ground with the optional wire feeder trolley.
- 5m and 10m inter connection cables.
- Lifting eyes.



PACK TYPE : ref. 032293 (no regulator)								
	+		+		+		+	
MAGYS 400 GR ref. 032187		WS-4R wire feeder ref. 034723		Inter connection cables 10m - 70 mm ² ref. 034860		Earth cable 4m - Ø 50 mm ² ref. 043824		Steel / Stainless steel 350A - 4m (AIR) ref. 040946

OPTIONS



Trolley for WS wire feeder
040977



Regulator 30L/min
 🇫🇷 041622
 🇩🇪 041219
 🇬🇧 041646



Polarity reversal cable
033689

Inter connection cables

L.	Air cooled	
	Wire	Ref.
5m	50 mm ²	034822
5m	70 mm ²	034839
10m	50 mm ²	034853
10m	70 mm ²	034860

U ₁		I ₁		Ømm		Ømm		Electronic Control	EN60974-5 (40°C)	IP	cm/kg
24V	4A	GAS	NO GAS	200	300	200	300				
24V	4A	0.6	0.9	✓	✓	400	75W	1.0	410A @ 60%	23S	25x59x56
		1.6	2.4					1.2	320A @ 100%		/ 17