

Stealth

STEALTH-XG WELDING/GRINDING HELMET & DIGI-AIR PAPR COMBINATION



Part No.	Description
6044	Welding and Grinding PAPR System

TRUECOLOUR LENS

HELMET FEATURES

- Lightweight, ergonomic design with high impact resistance material
- Flip up with large clear view for grinding/cutting
- All-around head protection
- Fast and easy switch between Grinding and Welding
- Simple in/out structure for convenient replacement of external cover lens
- User-friendly remote design with wireless interface and OLED display
- Multi-featured interface menu provides easy and quick ADF setting
- Remote can either be locked on helmet or taken off
- Environmentally friendly rechargeable Li-ion battery design
- No battery replacement needed.
- Lightweight, slim compact design to reduce fatigue and increase comfort
- The ADF is 27% thinner and 20% lighter
- Unprecedented true colour technology provides a true visual world
- Supplied with a carrying bag – see opposite page

PAPR FEATURES

For PAPR features – see page 319

For PAPR spare parts – see page 322

ADF LENS FEATURES

CE Classification	1/1/1/1
True Colour	Yes
View Size	100 x 60mm
Arc Sensor	4
Shade Range	4/5-9/9-13
Delay Range	0.1-0.9s
Shade number of POWER OFF state	3.6#
Power On/Off	Fully Automatic
Adjustment Mode	Wireless remote control
Switching Time	0.08ms
Grinding Function	Yes
Cutting Function	Yes, Shade 5#-8# adjustable
Low Battery Indicator	Yes
Low Amperage TIG Rated	3A
Power Supply	Solar cell, Li-ion rechargeable
Certification	CE, ANSI, CSA, AS/NZS
Display	OLED
Mode Setting	Press and Turn
Short Press (<1s)	Shade → Sensitivity → Delay Time
Long Press (>1s)	Welding → Grinding → Cutting
Power Supply	Li-ion rechargeable
Battery Chargeable time	>500 times

SAFETY & PPE

Stealth

STEALTH-G GRINDING HELMET & DIGI-AIR PAPR COMBINATION



Shade 3 lens available

Part No.	Description
5044	Grinding PAPR System

HELMET FEATURES

- Lightweight, stylish and ergonomic design
- High impact resistance polycarbonate visor
- Excellent front and peripheral vision
- All-round head protection

SHADE 3 LENS AVAILABLE

- Alternative shade flip-up and inner visor effectively provides UV/IR protection
- Applicable to welding, grinding and cutting
- Fast and easy replacement of flip-up and inner visor

PAPR FEATURES

- EN 12941 / TH3 PR SL approval
- Automatically variable air flow control – 170-200-230 l/min
- Auto shutdown in standby mode if unused for 30 minutes
- LCD – Air flow level and data
 - Battery life
 - Filter loading status
- Warning light and audio alarms with vibration for: Filter Block, Low Battery and Overheating
- Noise: Max 73dB
- Dimensions: 240 x 165 x 70 mm (L x W x T)
- Weight: 1370g (including filter, belt and battery)
1020g (excluding battery)
- Battery operating time: Level 1: >8 hours
Level 2: >6 hours
Level 3: >4 hours



The Stealth Grinding & PAPR System is supplied with a carrying bag – ideal for transportation and storage of spare parts

For PAPR spare parts – see page 322

HEADTOP SPARE PARTS FOR 4044

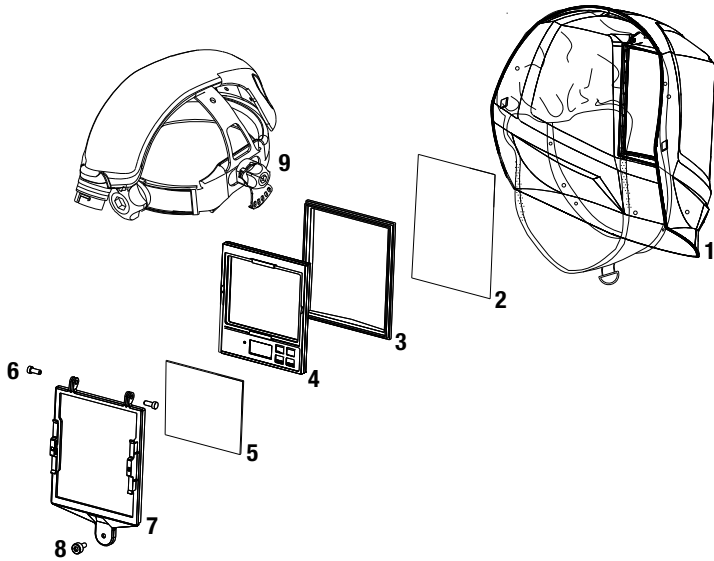


Figure	Part No.	Description
1	4044HELM	Helmet Shell c/w Faceseal
2	1482	Outer Protection Lens
3	4044RET	Lens Retainer
4	3054	Auto-Darkening Filter (ADF)
5	3025	Inner Protection Lens
6	3044CLIP	Clip (x2)
7	4039CRAD	ADF Cradle
8	3044SCRE	Screw Fixing Lens Retainer
9	4044BAND	Headgear with Airduct
10	3044SB	Sweatband

HEADTOP SPARE PARTS FOR 3044

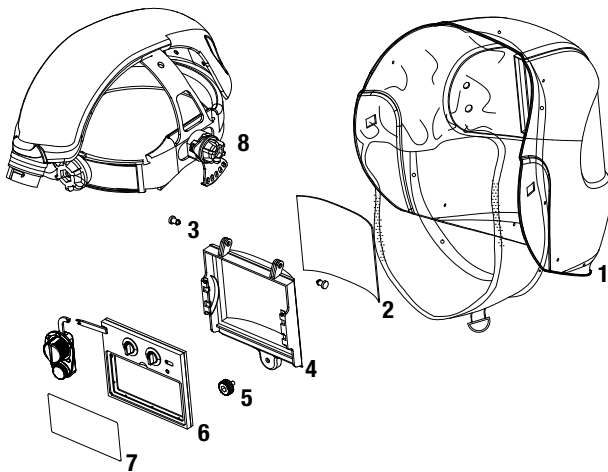


Figure	Part No.	Description
1	3044HELM	Helmet Shell c/w Faceseal
2	3024	Outer Protection Lens
3	3044CLIP	Clip (x2)
4	3039CRAD	ADF Cradle
5	3044SCRE	Screw Fixing Lens Retainer
6	3039	Auto-Darkening Filter (ADF)
7	3020	Inner Protection Lens
8	3044BAND	Headgear with Airduct
9	3044SB	Sweatband

PAPR SPARE PARTS FOR 6044, 5044, 4044 & 3044

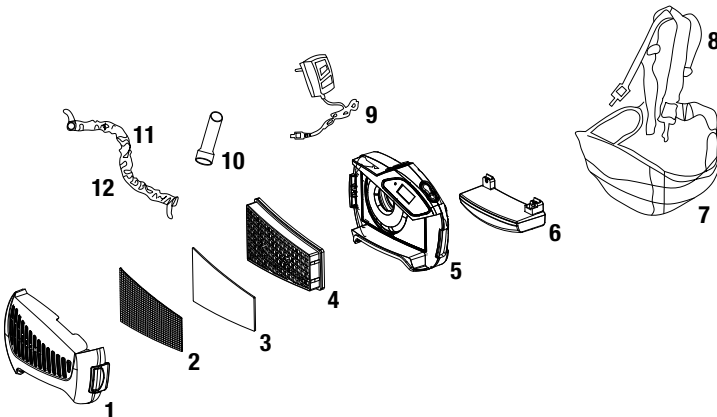


Figure	Part No.	Description
1	3044COV	Proline Filter Cover
	4044COV	Stealth Filter Cover
2	3044GAU	Gauze Filter
3	3044PRE	Pre-filter
4	3044P2	Filter
5	3044BLOW	Turbo Unit
6	3044BAT	Rechargeable Battery
7	3044BLT	Waist Belt
8	3044HARN	Shoulder Harness
9	3044CHA	Battery Charger
10	3044TEST	Air Flow Tester
11	3044HOSE	Breathing Hose
12	3044HCOV	Breathing Hose Cover